

AI in Schools: What to Know

Part 4: AI for Teachers

There are many ways AI can be used by teachers to save time and improve their teaching. It is particularly useful when it comes to prep work and monitoring student progress.

Lesson Prep

Depending on how long you have been teaching you probably have a collection of existing lessons you can reuse or you share lessons with your grade team. However, there are still times where you need to create new lessons and this is where AI shines for lesson prep.

There are many AI tools that use LLMs to generate outlines or lessons based on a quick sentence or two describing what you want to cover (e.g. “I’m teaching 4th graders about the solar system”). These tools often allow teachers to select the standards for the lesson to ensure that the material is aligned with state standards.

Assessments

Similar to creating outlines for lesson prep, AI can also be used to generate assessments on a particular topic. In the earlier example, maybe you ask it to create multiple choice questions about the planets in our solar system. This can be a way to mix up the content of your assessments so you’re not giving the same test repeatedly. Or maybe you’ve assigned a group project or essay and want to generate a rubric to ensure you’re grading fairly.

Product Spotlight

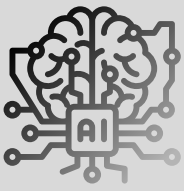
Seesaw AI by Seesaw



Many classrooms are already using Seesaw making their AI offerings a great option for teachers. Features include the ability to convert paper lesson resources into digital interactive versions, grading reading assignments, and generating lessons or quizzes based on a topic.

Progress Reports

When using personalized learning tools or AI grading tools teachers can benefit from the data that’s collected in the form of student progress reports. Instead of grading each student's work individually, these tools allow you to visualize progress at the student, class, grade, and even district level.



AI in Schools: What to Know

Part 4: AI for Teachers

Review Topics

AI also creates an opportunity to leverage student assessment data to address gaps in student learning. Using student scores, whether collected manually or through an AI progress report, AI tools can identify units or topics where student comprehension is incomplete and suggest topics for review. Maybe you cover these in a future lesson before moving on to more advanced concepts or you use them to generate an extra credit assignment.

Monitoring Student AI Use

Safety and quality of answers are a big concern when introducing AI to the classroom. Currently, this is handled differently by product so it's important to understand the controls each makes available. Some tools flag inappropriate interactions for teachers while others allow teachers to monitor all student interactions with AI. Additionally, products may offer a single setting for turning off all AI features in the product or allow for disabling individual features.

Product Spotlight Kira by Kira Learning

Kira is a personalized learning platform that not only adapts lessons to individual students (e.g. adjusting reading level) but also provides AI support tools for students and teachers. While working through a lesson students have the opportunity to interact with an AI tutor to get additional support as needed.

Teachers can also monitor student interactions to understand what topics students are asking the AI tutor about that might need reinforcement. Kira also provides controls to set AI availability and guidance level on a per-class or per-student basis.



Teaching About AI

Just as teachers need to learn how to use AI responsibly it's also important to teach students how to use AI responsibly. LittleLit (www.littlelit.ai) has resources to help teachers introduce students to AI.